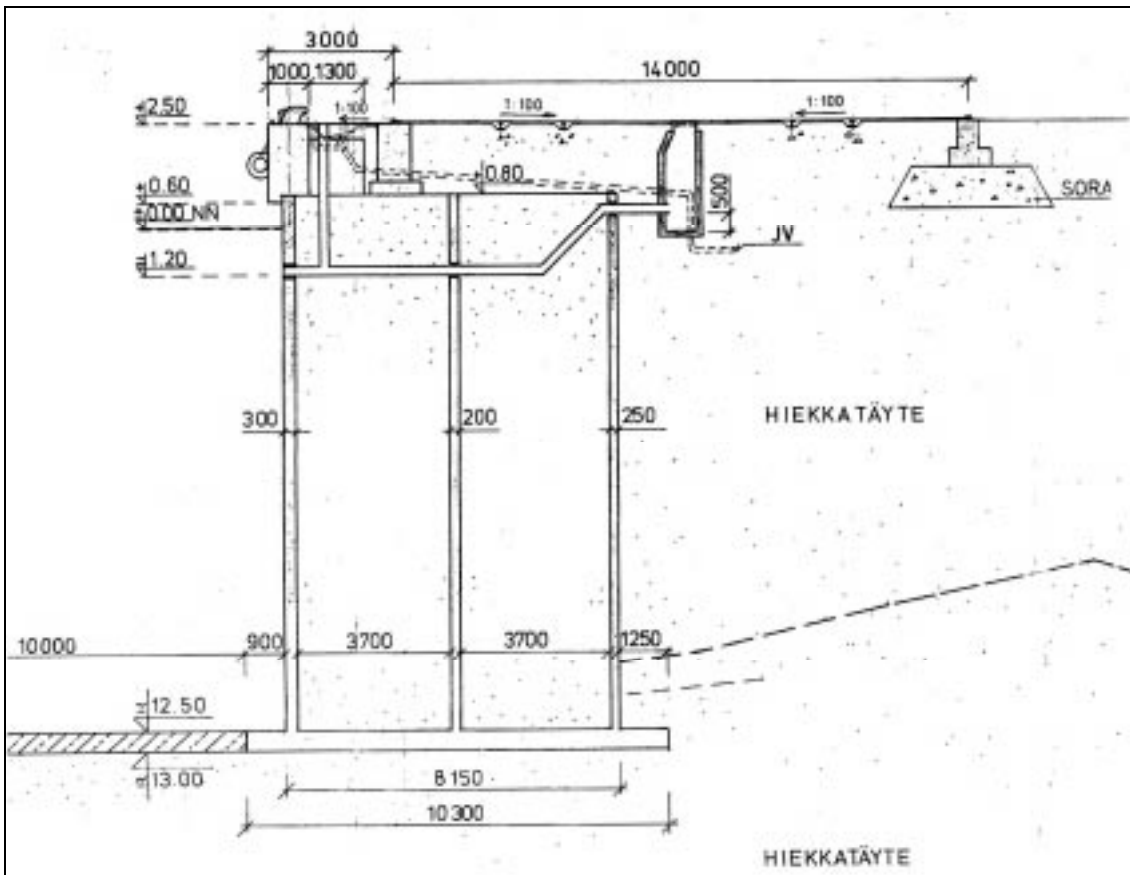
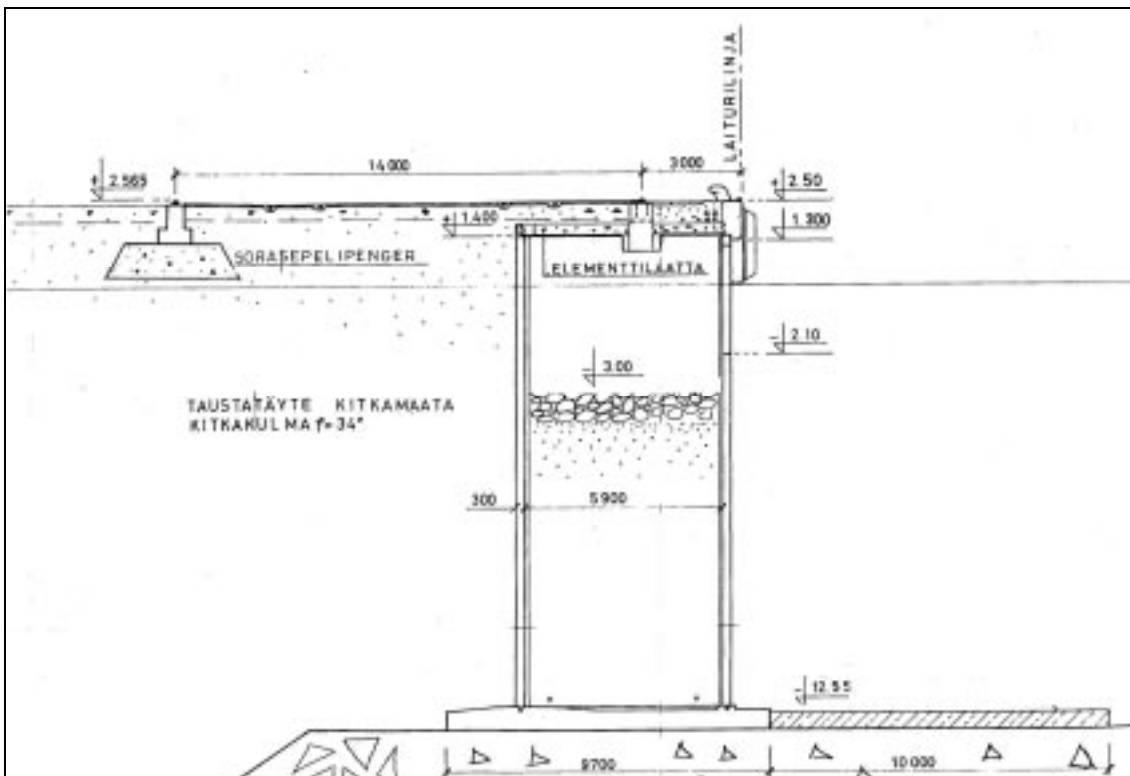


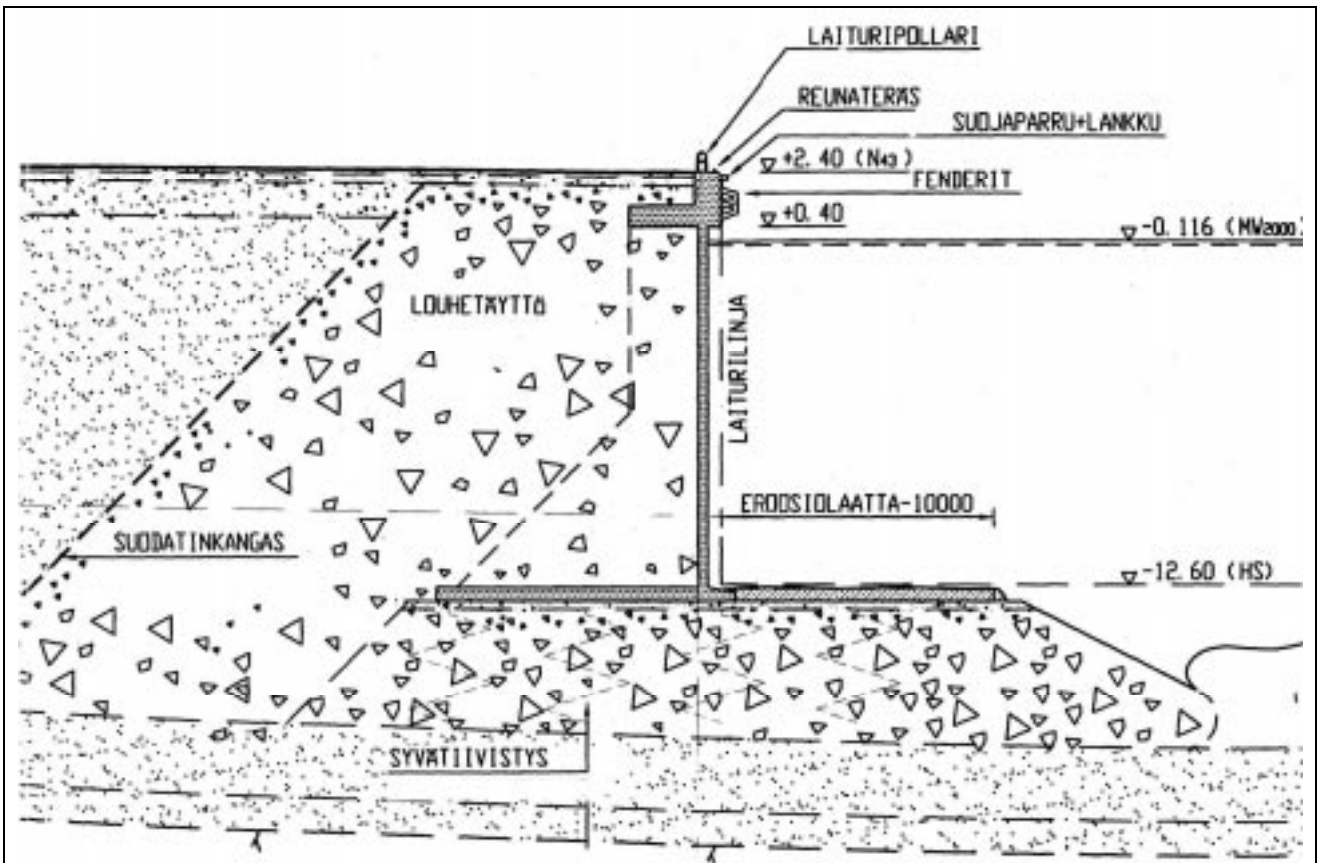
# 1. Laiturien rakennetyyppejä



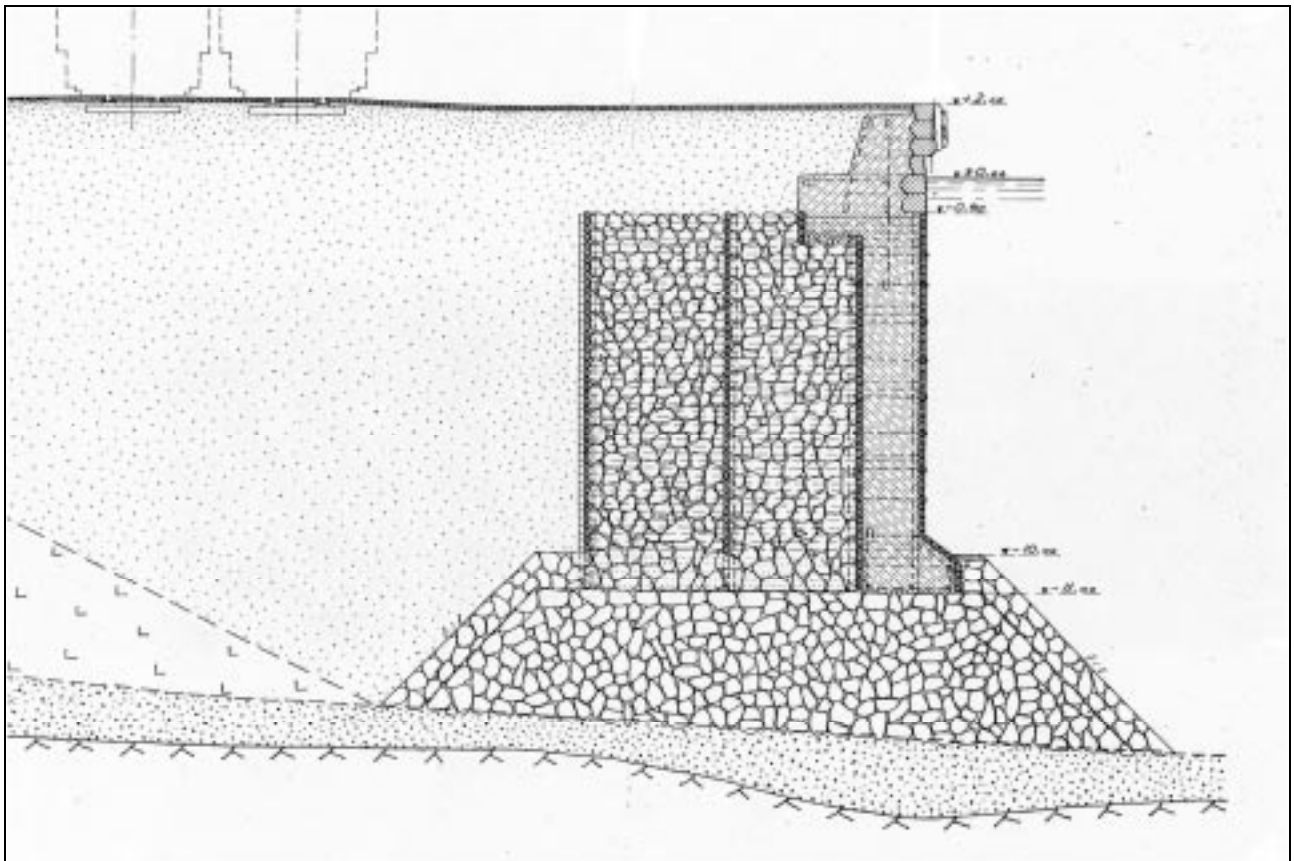
Kuva 1 . Kasunilaituri



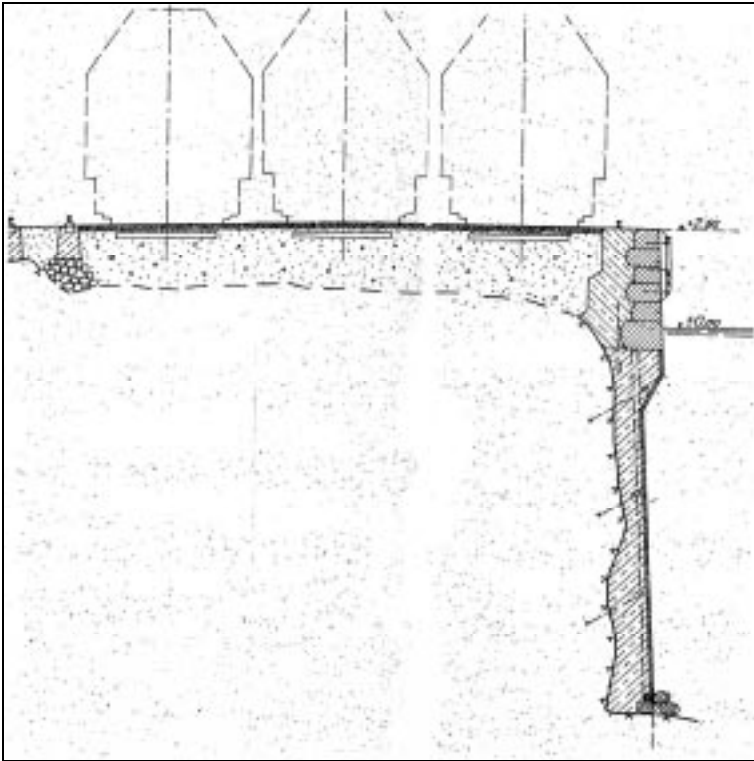
Kuva 2 . Kasunilaiturilaituri (Aallonvaimennuskammio)



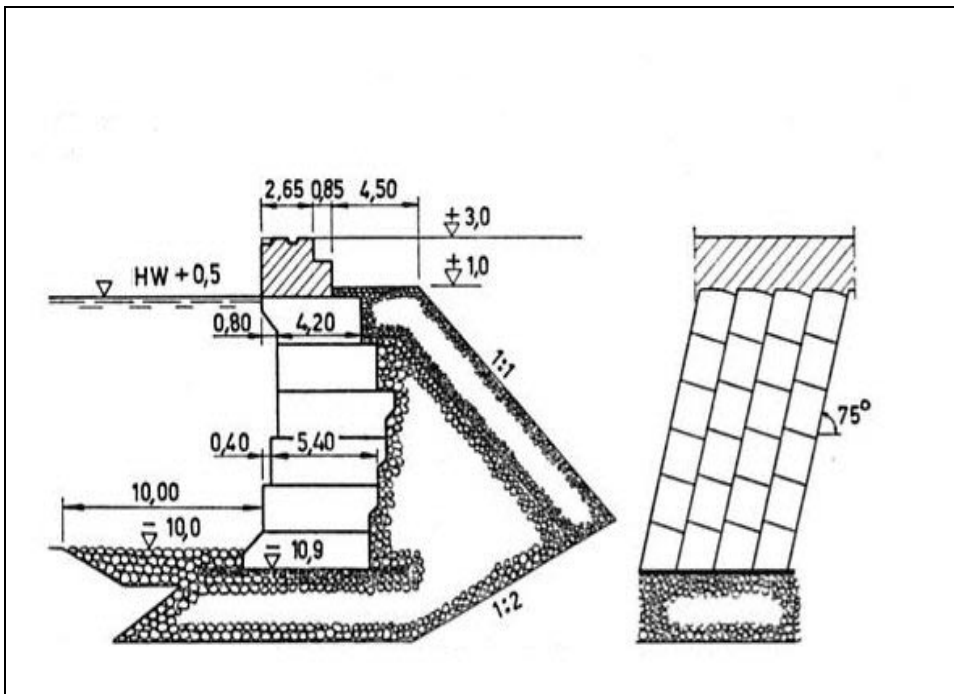
Kuva 3. Kulmatukimuri



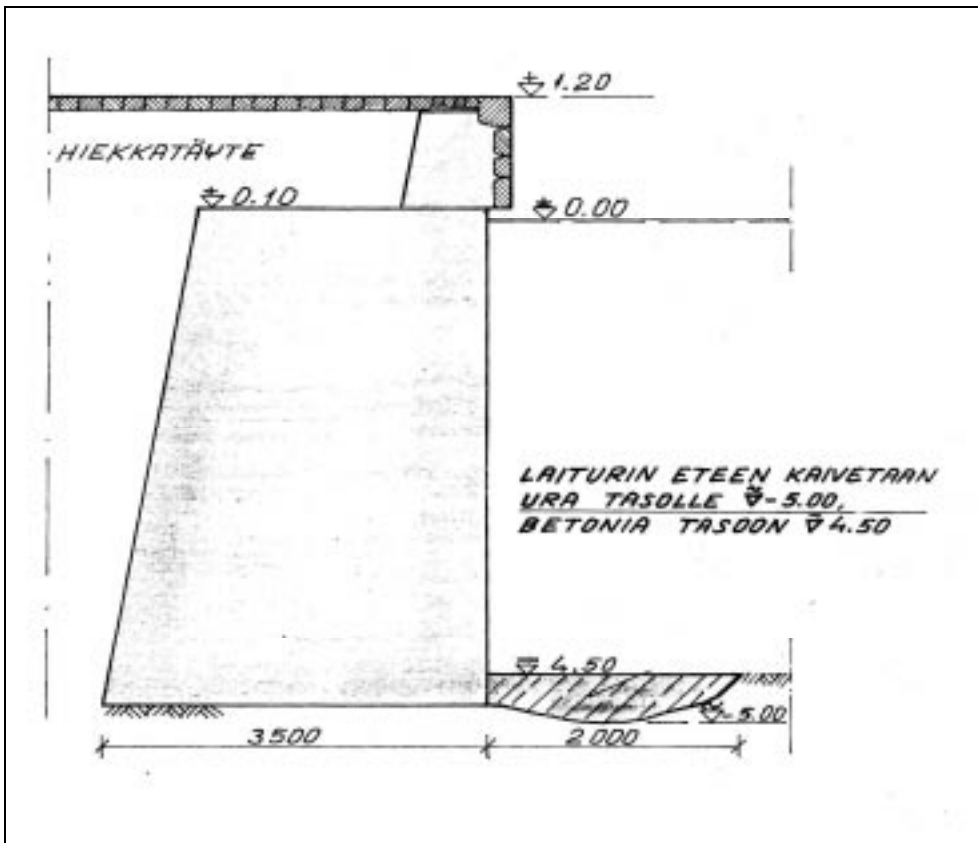
Kuva 4. Arkkulaituri



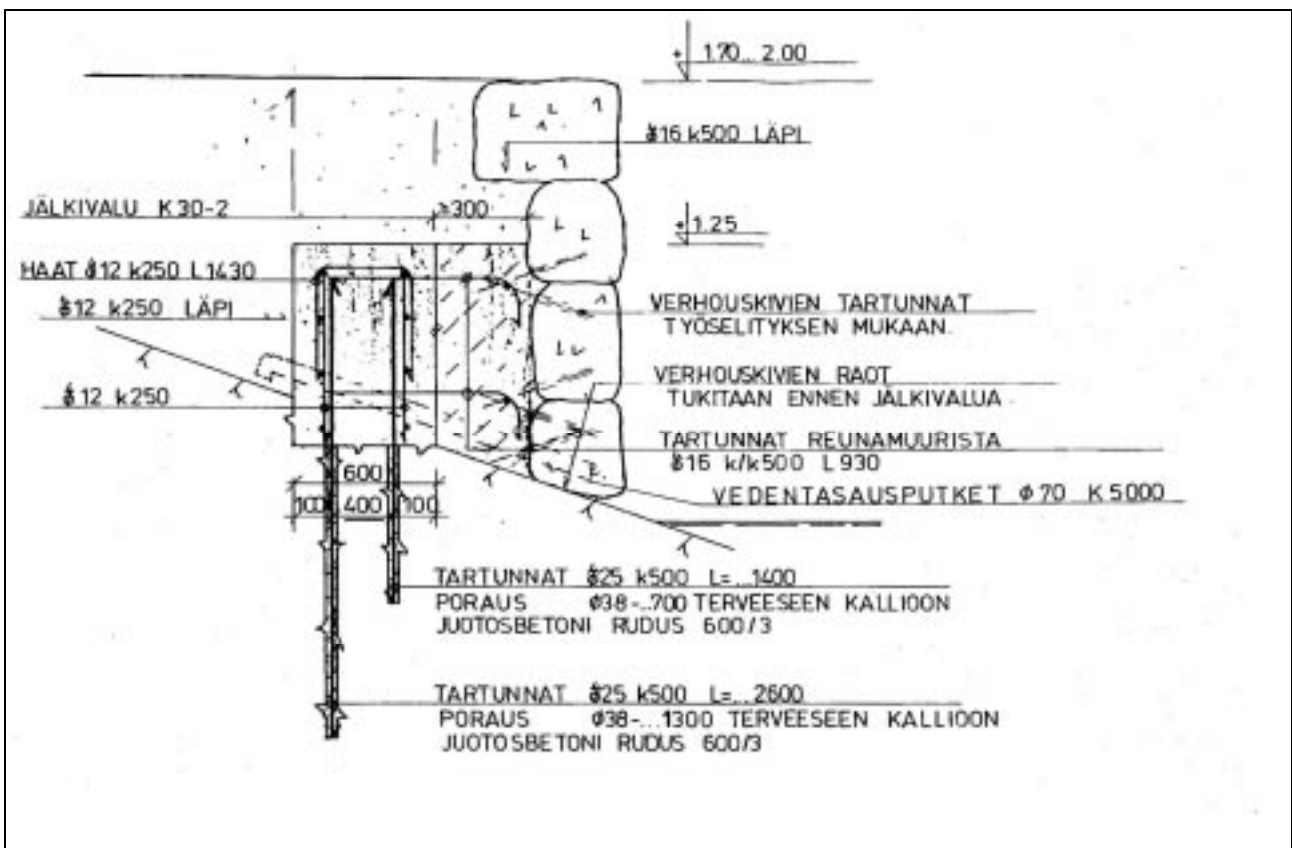
Kuva 5. Vahvistettu kallioseinälaituri



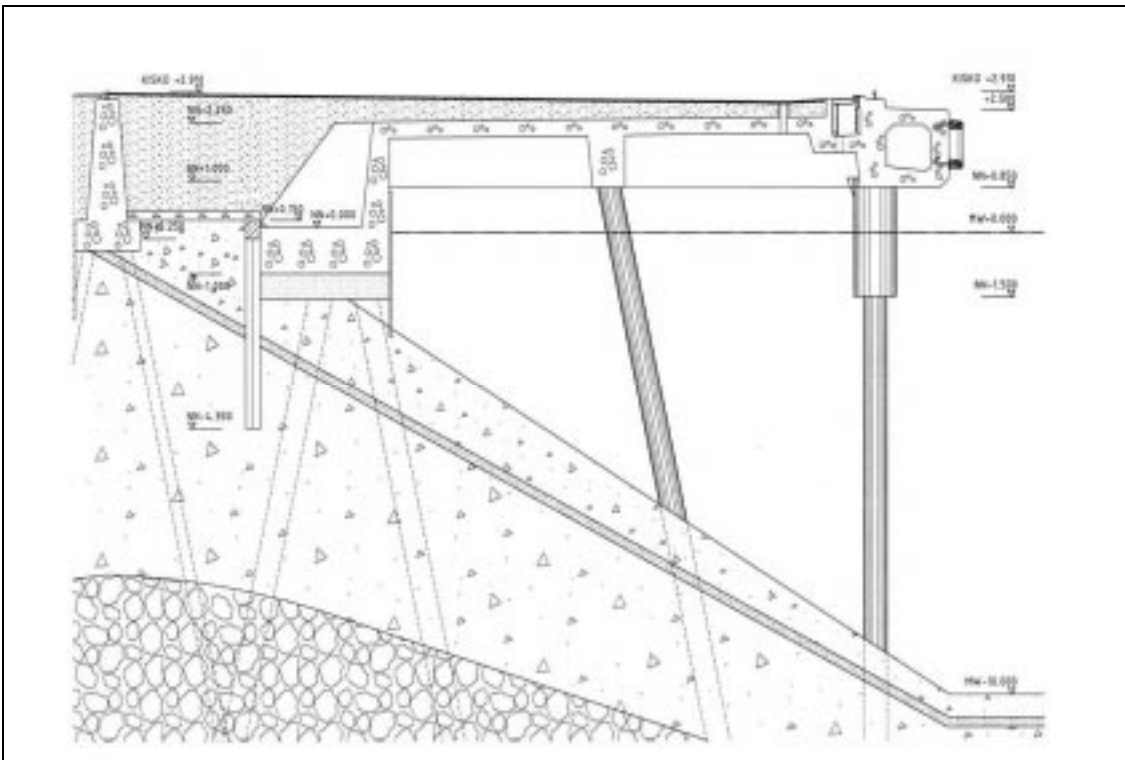
Kuva 6. Massiivibetoniblokkilaituri



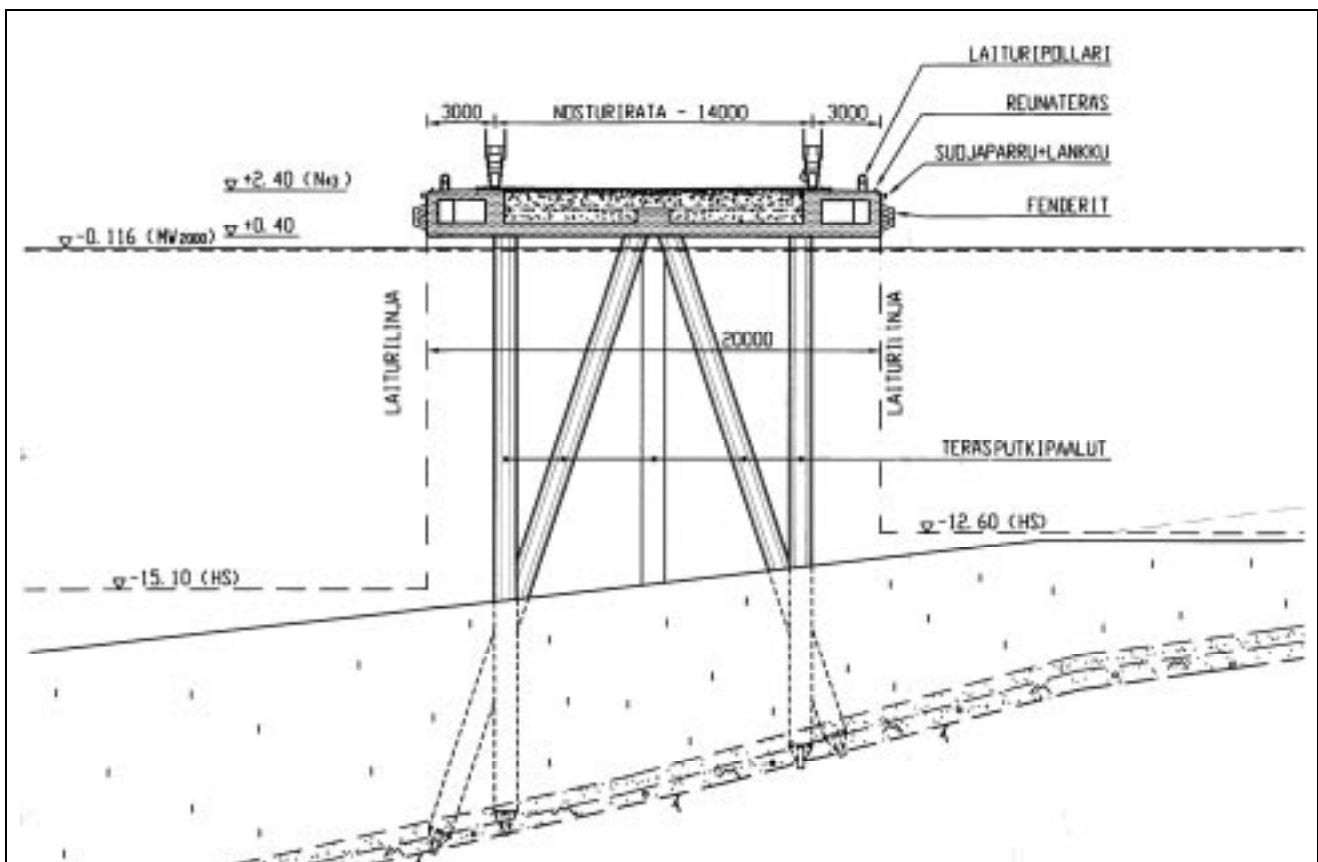
Kuva 7. Paikalla valettu betonilaituri



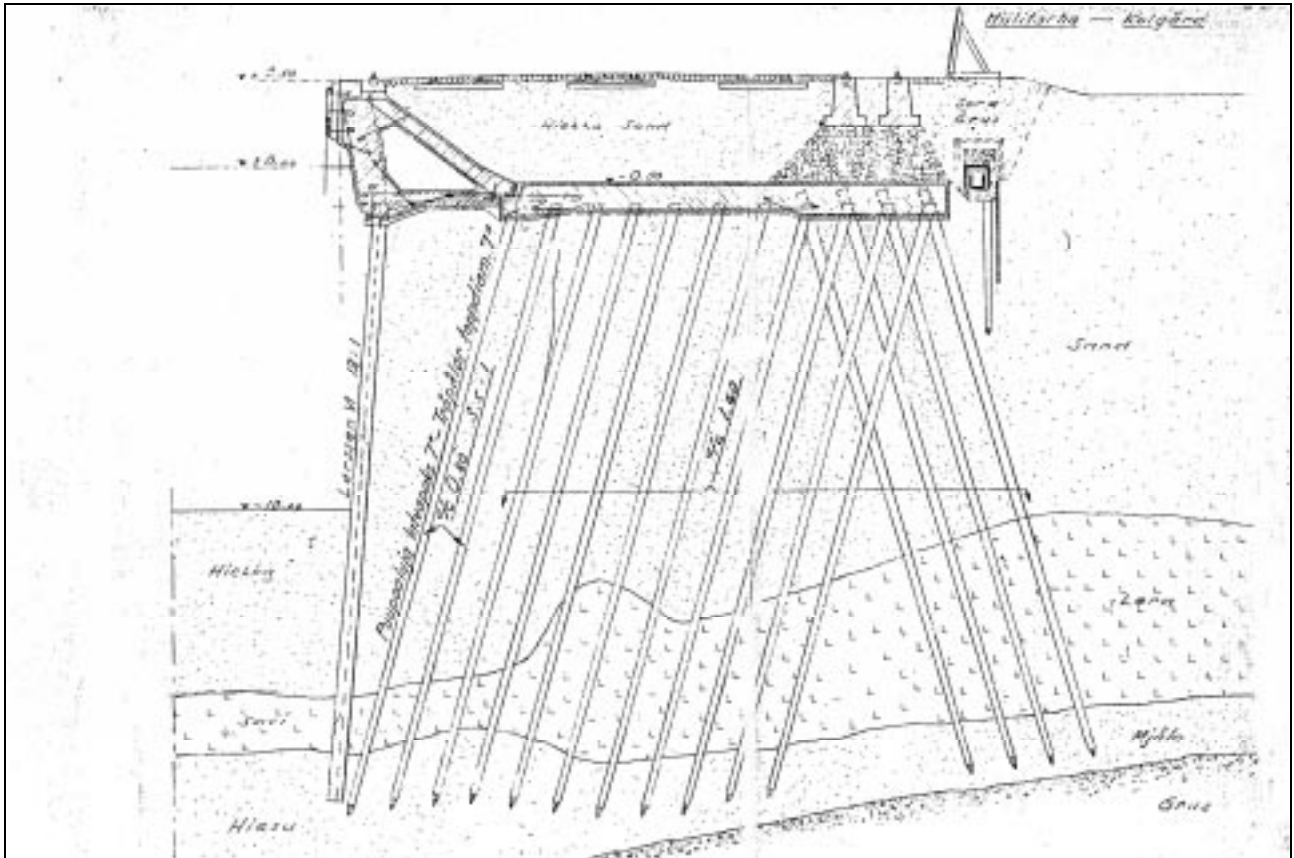
Kuva 8. Massiivikivimuuri



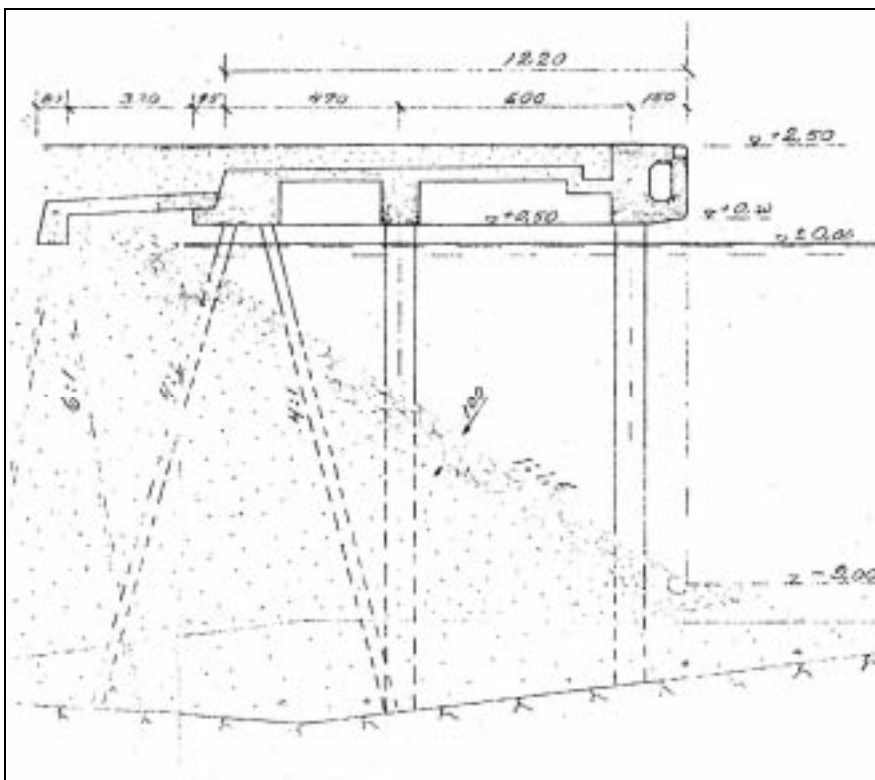
Kuva 9. Puoliavoin paalulaituri



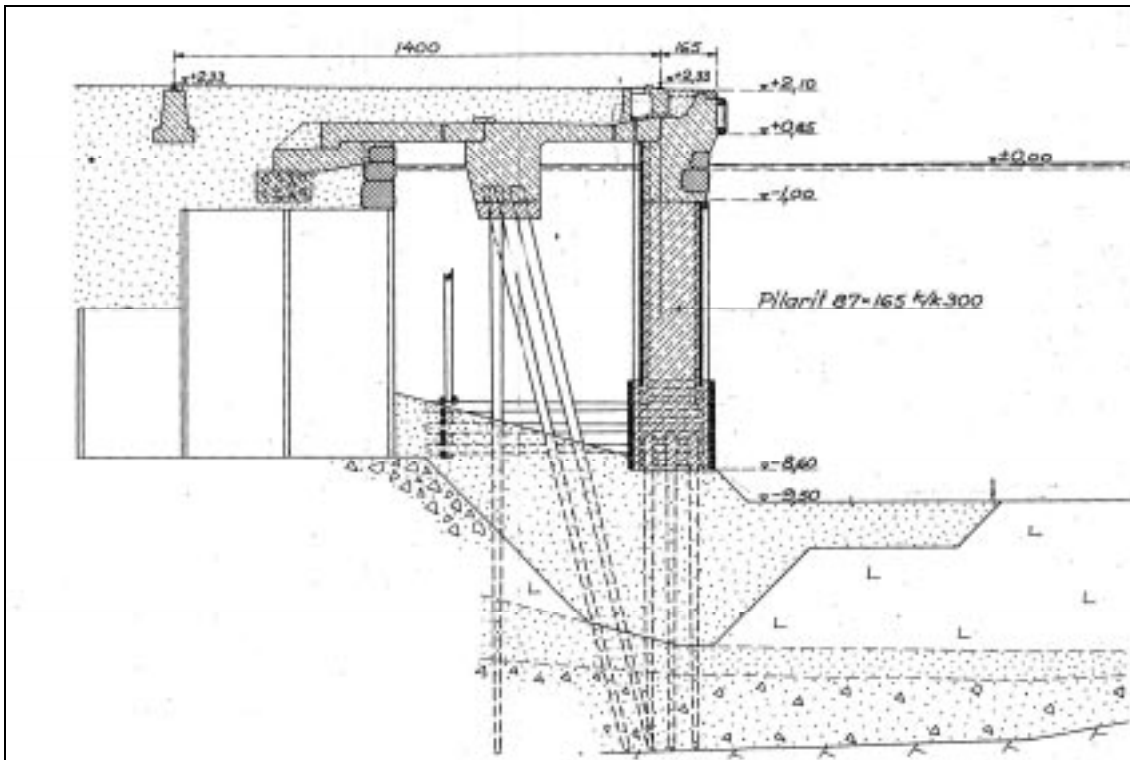
Kuva 10. Avoin paalulaituri (Paalupistolaituri)



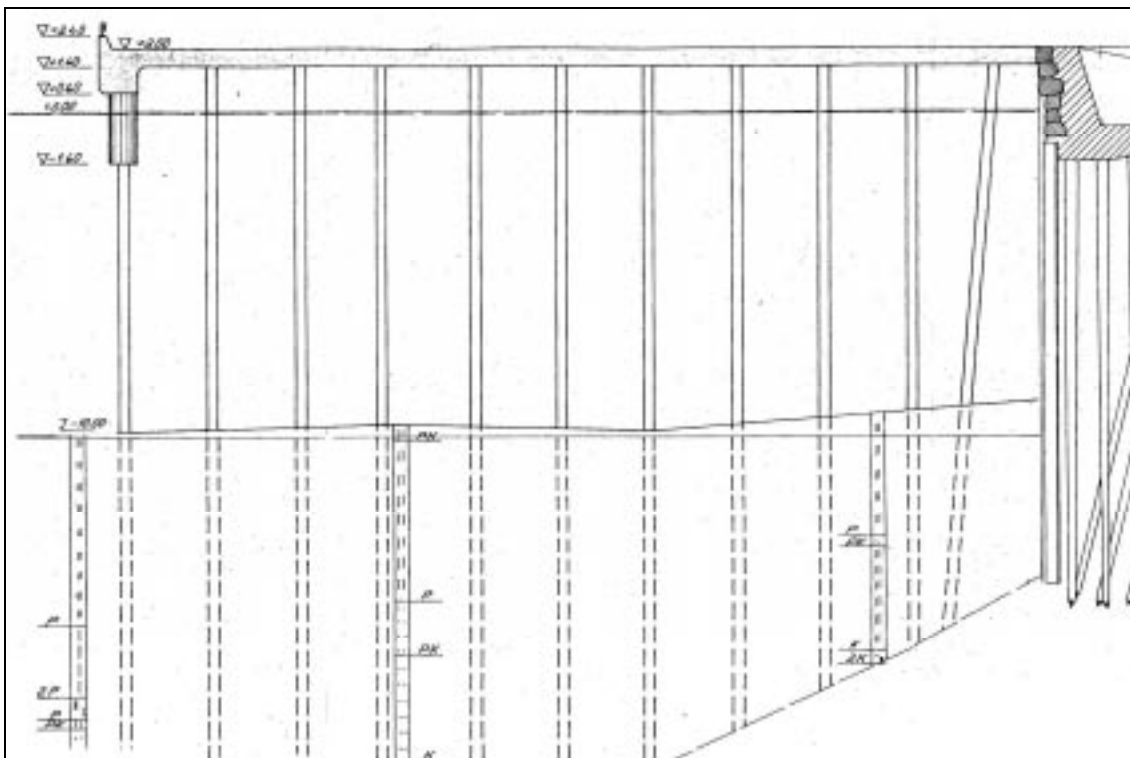
Kuva 11. Pontipaaluvarinalaituri



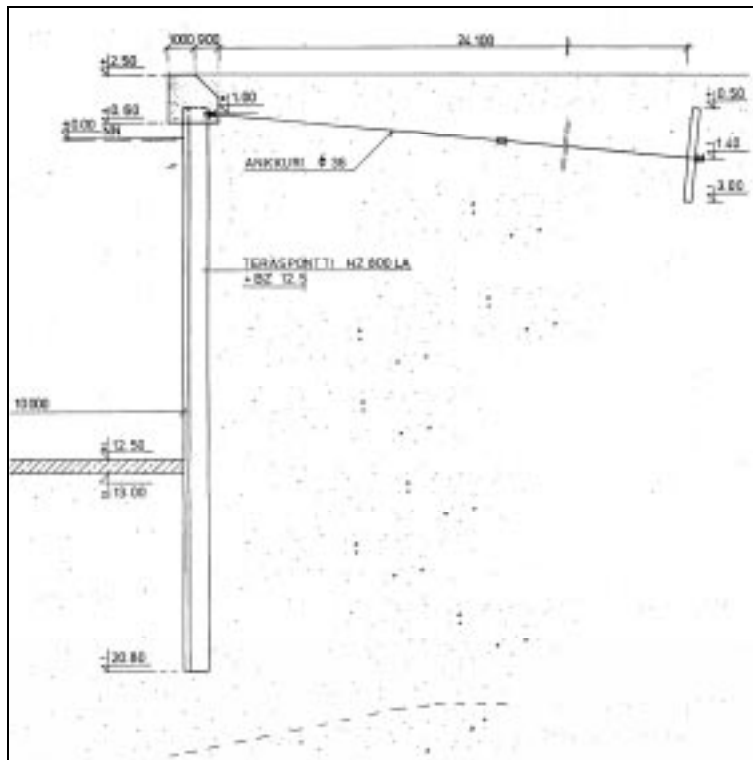
Kuva 12. Pilarilaituri



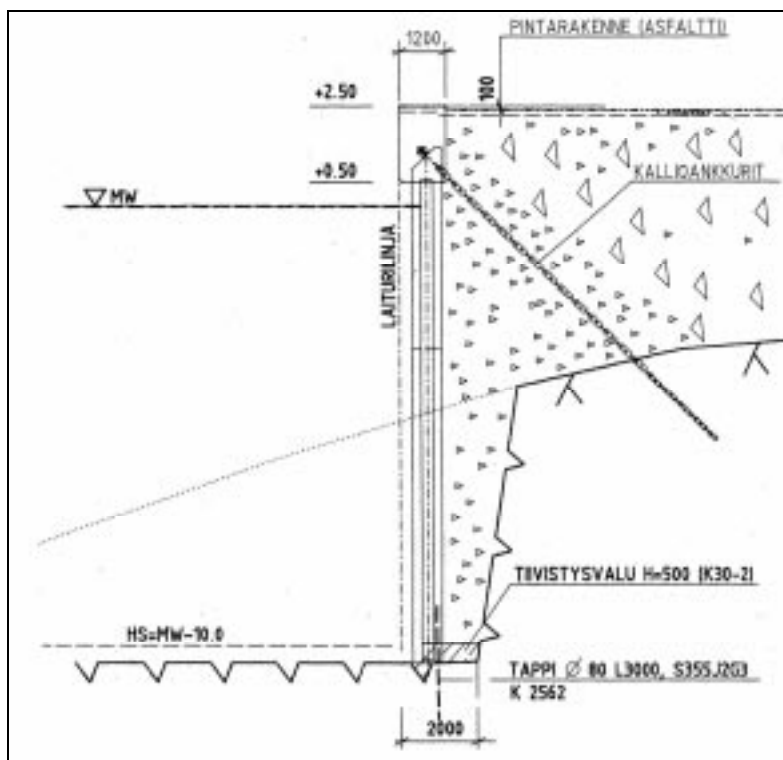
Kuva 13. Pilari/arkkulaituri



Kuva 14. Lyöntipaalulaituri

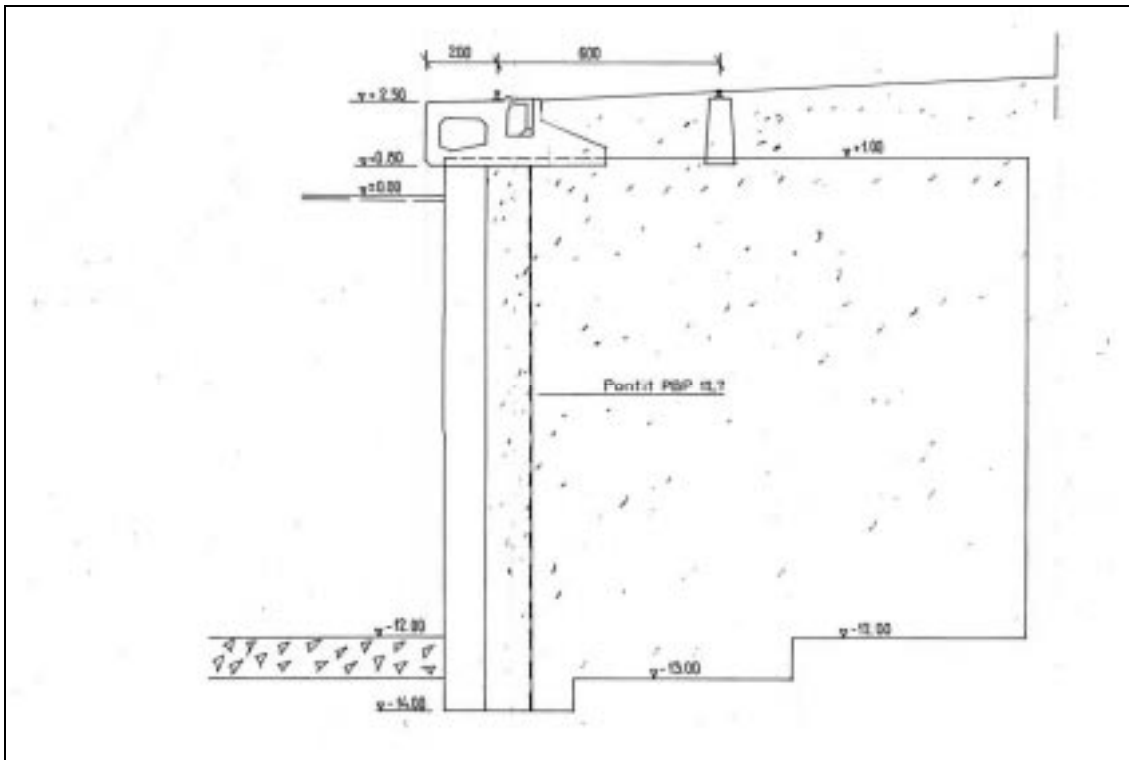


Kuva 15. Ankkuroitu teräsponttiseinä



Kuva 16. Ankkuroitu teräsputkiponttiseinälaituri





Kuva 17. Teräsponttilieriölaituri