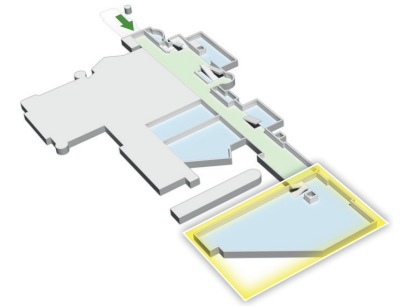
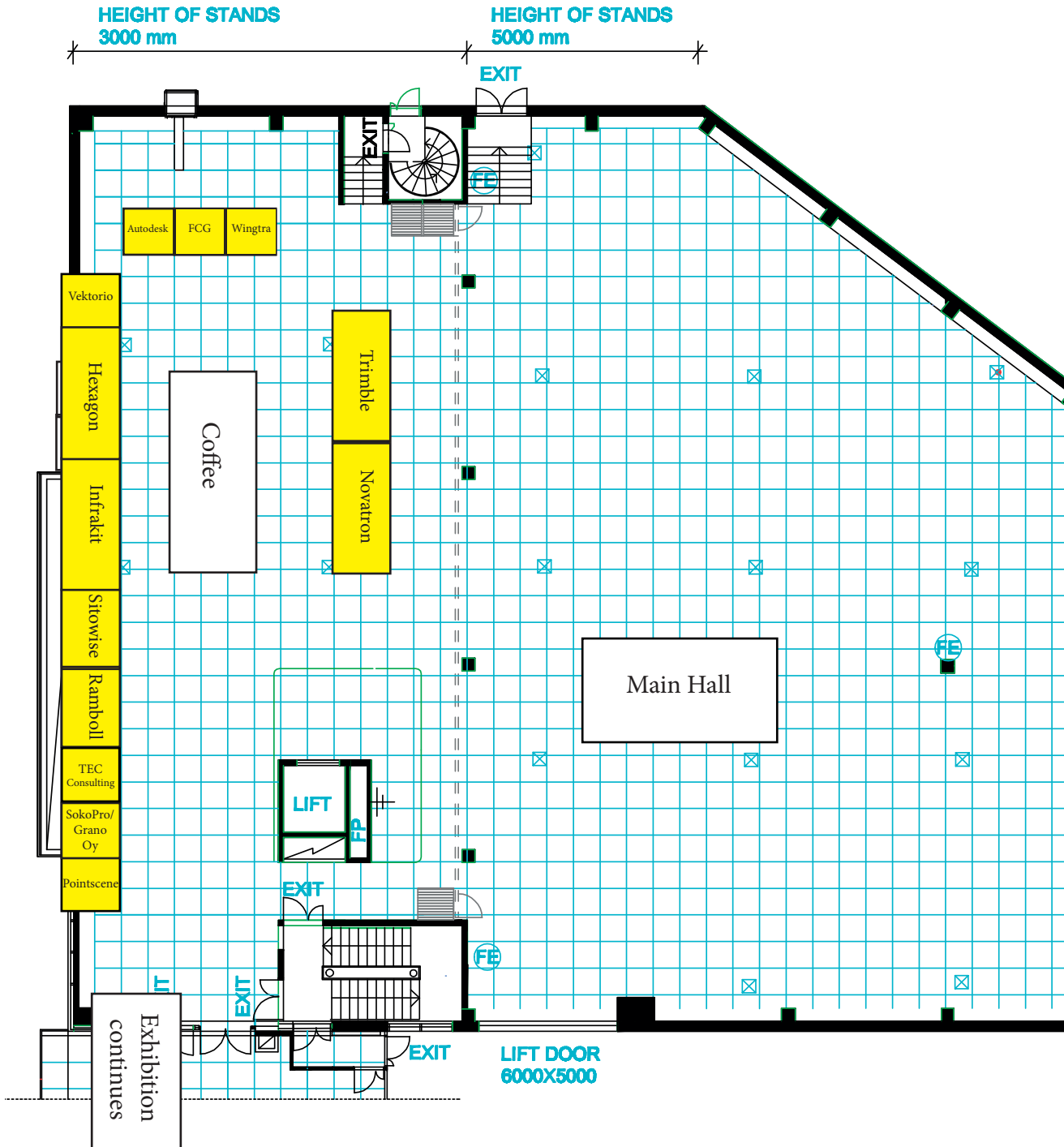


# Sorsapuistosali / Park Hall

Kerros / Floor 1



**Kokonaispinta-ala** 1320 m<sup>2</sup>  
Total floor area

**Rakennekorkeus** 300 - 500 cm  
Height of stands

### Täydellinen LVI- ja sähkötekniikka

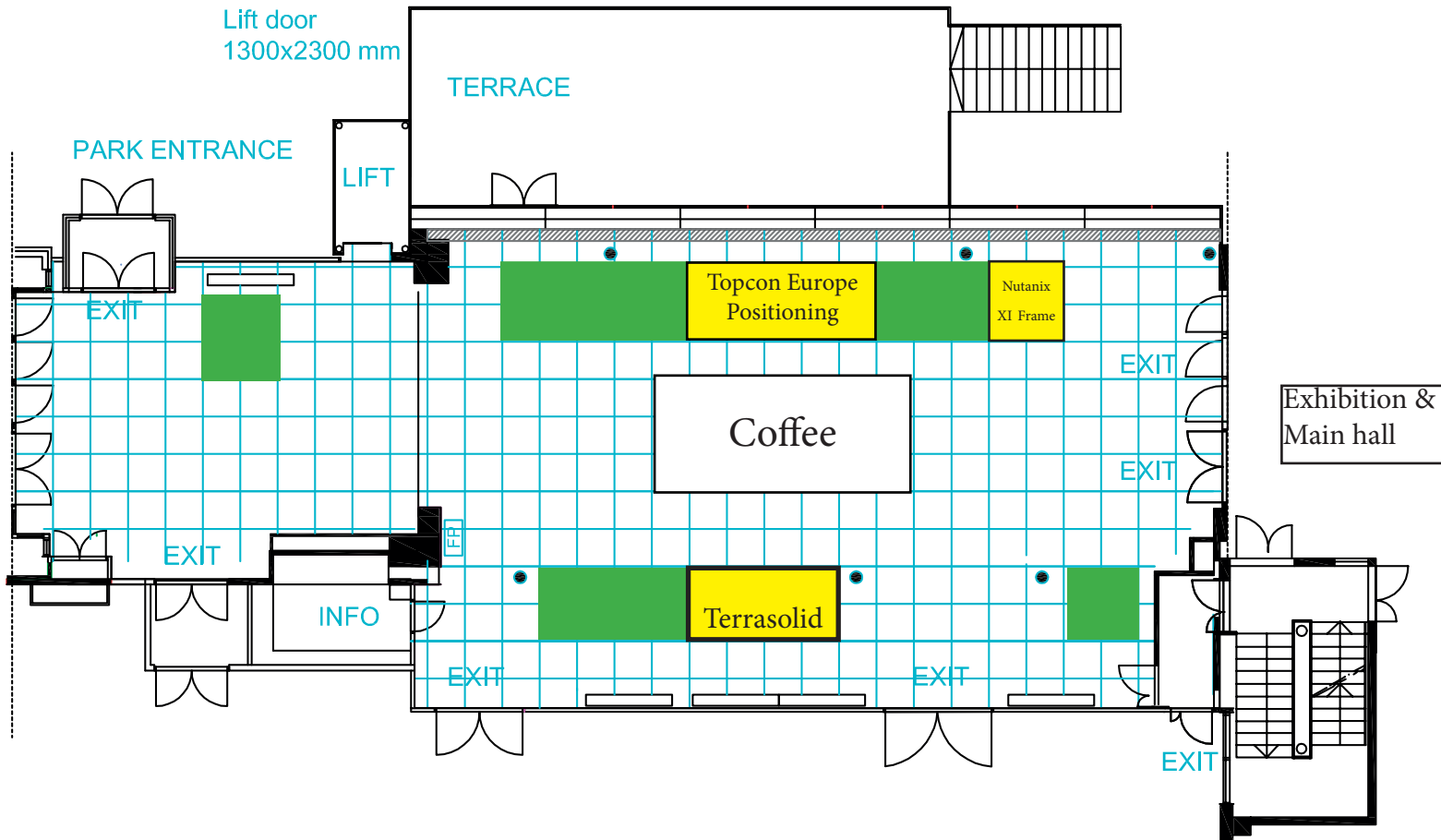
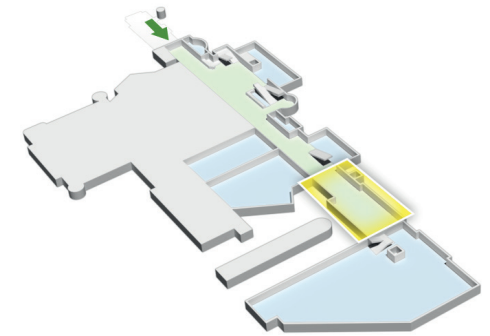
Heating, lighting, electrical equipment, ventilation, and air conditioning

●	<b>Pilari</b>	Pillar
⊠	<b>Tarkastusluukku</b>	Technical Service Trap
FP	<b>Paloposti</b>	Fire Post
⊝	<b>Palosammutin</b>	Fire Extinguisher

*Mittakaava: 1 ruutu = 1m<sup>2</sup>. Mitat tarkistettava paikan päällä.  
Drawing scale: 1 square = 1m<sup>2</sup>. Measurements to be verified on location.*

# Puistolämpö 1 / Park Foyer 1

Kerros / Floor 1



**Kokonaispinta-ala** 360 m<sup>2</sup>  
Total floor area

**Rakennekorkeus** 250 cm  
Height of stands

**Täydellinen LVI- ja sähkötekniikka**

Heating, lighting, electrical equipment, ventilation, and air conditioning

●	<b>Pilari</b>	Pillar
⊠	<b>Tarkastusluukku</b>	Technical Service Trap
FP	<b>Paloposti</b>	Fire Post
⊙	<b>Palosammutin</b>	Fire Extinguisher

**Mittakaava: 1 ruutu = 1m<sup>2</sup>. Mitat tarkistettava paikan päällä.**  
Drawing scale: 1 square = 1m<sup>2</sup>. Measurements to be verified on location.